



SLCA

SALT LAKE CLIMBERS ALLIANCE

Corporate Sponsorship.

2024 Benefits

Our Reach

750+ Annual Fundraiser Attendees
350 + SLCA Climbing Fest Attendees
20K+ Email List
5.5K+ Facebook
14K+ Instagram
& growing...

2024 Events

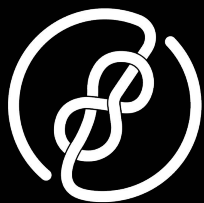
- Member Mixers - January - February
 - New Routers Symposium - March
 - Adopt a Crag
 - Wasatch Challenger Comp- May
 - Annual Fundraiser - June
 - SLCA Climbing Festival- August
 - Wasatch Challenger Comp - October
 - Live PC Give PC - November
 - Climbers Coffee at the Crag
 - Film Events
- & more to come!

Contact

Cheyenne Bushman
Events@SaltLakeClimbers.org

About Us.

The mission of the Salt Lake Climbers Alliance is to engage as an advocate to protect outdoor climbing access and as a steward to maintain sustainable climbing resources in the Wasatch and surrounding regions.



SLCA

SALT LAKE CLIMBERS ALLIANCE



Dear SLCA Sponsors,

I've worked with many of you for over a decade now and know that you personally and professionally care deeply about Wasatch climbing. The SLCA would not exist without this commitment from the community.

When you think about giving to this organization, please consider:

1. What is a meaningful contribution to you and your company that reflects your passion for protecting outdoor climbing in the Wasatch.
2. Humble brag your commitment to your clientele. It shows you care and at the same time elevates the SLCA into the consciousness of the community creating more crag citizens.

Here's to another decade of climbing in the Wasatch!

Julia Geisler
Executive Director, SLCA
Julia@SaltLakeClimbers.org



Corporate Sponsorship Opportunities

5.13 = \$15,000 + & \$1,000 in Product

Logo 5.13 Placement
10x20 Booth Space
Prime Placement at Events
Recognition at Public Meeting
2 comped vendor tickets + 50% off code to share with employees
Social Media Features
Email Ad Inclusions
Co-branded Swag
Meet & Greet with the SLCA for Employees
Company Stewardship Opportunities

5.12 = \$7,500 & \$500 in Product

Logo 5.12 Placement
10x10 Booth Space
5.12 Placement at Events
Recognition at Public Meeting
2 comped vendor tickets + 40% off code to share with employees
Social Media Mentions
Email Ad Inclusions
Co-branded Swag

5.11 = \$2,500 & \$250 in Product

Logo 5.11 Placement
10x10 Booth Space
5.11 Placement at Events
Recognition at Public Meeting
2 comped vendor tickets + 30% off code to share with employees

Nonprofits Other Partners

10x10 Booth at our Events
50% off Vendor tickets
Logo Placement

5.10 = \$1,000 & \$150 in Product

Logo 5.10 Placement
10x10 Booth Space
5.10 Placement at Events
2 comped vendor tickets
Recognition at Public Meeting

5.9 = \$500

Logo 5.9 placement
10x10 Booth Space
5.9 Placement Events
2 comped vendor tickets
Recognition at Public Meeting



Anchor Maintenance Equipment

- 24" or 60cm shoulder slings x 10
- Wire gate carabiners x24
- .75 cam or equivalent x1
- 50L backpack x2
- Grigri or like device x2
- Work seat x1
- Nano Traxion x2
- Grillon x1
- SingingRock Tool Bag x2
- Wall Hammer x 1
- 5 hand drills



SLCA Staff and Volunteer Appreciation

- Board and Staff Gym Membership
- Day passes to gyms for volunteer appreciation

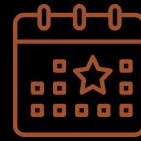
Apparel

- Staff 10
- Volunteers 20



Share the Mission

- We know you care about Wasatch climbing! Help share mission of the SLCA through social media campaigns/posts
- Share event information with employees, incentivize staff to come out to events
- Add SLCA Information Kiosk to facility
- Install a SLCA info kiosk in your facility (provided by and updated by the SLCA)



Events

- Venue Spaces: Title Sponsor for event you host
- Stage Sponsor
- Athlete/ pro incorporation: Speakers, Clinics, Education
- Sponsor/ Facilitate Yoga/ Pilates
- Live Music Sponsors
- Facilitate Bonfire and Smores
- Raffle Donations
- Wasatch Challenger Placement Prizes
- Event Attendee swag bag items (non sizeable) (500): socks, hats, chalk bag, chums, gym rope bags, mugs, nalgens
- Provide Demos for Festival
- Day passes to gyms for Raffle



Recurring Donation Platforms

- Opt out monetary amount donation and/or joining SLCA's newsletter on checkout page

AID BETA

LISTED ABOVE ARE MORE WAYS TO SUPPORT YOUR CLIMBING NON-PROFIT; THROUGH GEAR AND SWAG DONATIONS, PROMOTION, AND INTERACTIVE FACILITATION AT EVENTS.



STAGE SPONSOR

Be our Stage Sponsor for
2024!

Secure prime real estate at our
SLCA Climbing Festival by
featuring your company logo
on our stage banner and LED
light wall.



APPAREL SPONSOR

Elevate your brand's visibility at all our events as our Staff, Anchor Techs, Board of Directors, and Event Crew proudly showcase your company's gear and apparel. This not only underscores your commitment to supporting local organizations but also serves as a testament to the quality of your products, aligning your brand with the SLCA's recognized standing in the climbing community.



Board of Directors & Staff



Board of Directors

Jess Powell - Chair
Amy Cairn - Vice Chair
Ryan Suen - Treasurer
Angie Clifford- Secretary
Darren Knezek
Sarah Inwood
Jesse Sandstrom
Patrick Morrison
Pitt Grewe



Staff

Julia Geiser - Executive Director
Andrew Brodhead -
Anchors & Advocacy Coordinator
Emily Trombly - Communications Coordinator
Cheyanne Bushman - Event, Sponsorship &
Membership Coordinator

Matt Clark - Anchor Tech
Chris Brown - Anchor Tech
Eric Salmi - Anchor Tech
Alex Lemieux - Anchor Tech



2023
DUES AT WORK

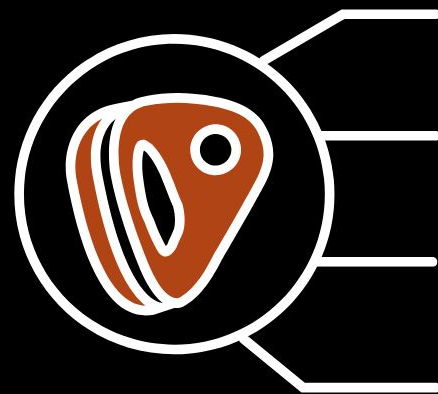
THANK YOU

While each of us have unique lived experiences, we all share a common internal motivation that brings us together as climbers and unites us in a common cause to advocate and steward Wasatch climbing. We represent your interests as outdoor climbers. We believe in the power of rock climbing to enrich lives and ensure the community can continue to go climbing.



ANCHOR MAINTENANCE

In 2023 our anchor maintenance crew visited 103 routes and replaced and maintained over 700 bolts around the Wasatch. That's over 1,561 hours of professional labor spread out between American Fork, the Cottonwoods, and Maple Canyon. Some popular crags that saw maintenance this year include Hard Rock, The Finn, Upper S-Curves, and The Compound to name a few. We continue to push standards in workers' safety, quality control, and work at heights standards locally and nationally.



3
CLINICS TAUGHT

103
ROUTES VISITED

1561
HOURS WORKED

700
BOLTS MAINTAINED



ADVOCACY

We have grown as an organization by being tenacious in our mission, ensuring access to climbing sites and stewardship of climbing landscapes. We keep climbing areas open on public and private lands across the Wasatch because of our good relationships with land owners and managers, including with the LDS Church to keep access open to the 140-acre Gate Buttruss property in lower Little Cottonwood Canyon.



EVENTS

Our **community events** in 2023 had over 1,500 attendees and included our annual fundraiser party, Wasatch Challenger climbing competitions, our climbing festival in a new location in the Uintas, Black Diamond's Golden Carabiner, donor mixers, film events, climbers coffees at the crag, and historical tributes. Join us again August 24-25th, 2023 for the 11th Annual SLCA Climbing Festival.

SALTLAKECLIMBINGFESTIVAL.COM





SALT LAKE CLIMBERS ALLIANCE CLIMBING FESTIVAL







SALT LAKE CLIMBERS ALLIANCE

SLCA FUNDRAISING PARTY

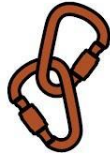


TRAIL STEWARDSHIP

We continue to steward climbing access trails across the Wasatch with help from volunteers and partners. This year we hired professional trail crews to continue our multi-year effort to improve and stabilize climbing access trails at the Gate Buttress in lower Little Cottonwood Canyon. This effort reduces impacts from climbers on the natural landscape and keeps access open for climbing.



THANK YOU



It takes the community to protect Wasatch climbing. We would like to thank each of you for doing your part to give back to the community and the places we love to climb.

2022 PARTNERS

5.13+

Black Diamond
Momentum Indoor Climbing Gym
The Front Climbing Club
& The Front Members

5.12

REI
Salt Lake Bouldering Project

5.11

Blue Ice
ArcTeryx
The Gear Room
Backcountry
Cypher
Petzl

5.10

Shadow Mtn Productions
Santero
Rab
Athletic Brewing
Kodiak Cakes
Moab Brewery
Gnarly Nutrition
Camp4 Collective

5.9

Solitude Mtn Resort
Scarpa
Sterling
CAMP
Rock Garden
Prival
Alpha Coffee
RDSH
La Sportiva
Wandervans
Single Track Trails
WaterPro
Wasatch Environmental Inc

Guide Outfitters

Jackson Hole Mountain Guides
Red River Adventures
White Pine Touring
Backcountry Pros
Utah Mountain Adventures
Aspect Adventure
Mountain Medical Academy
Inspired Summit Adventures

Non-Profits

Access Fund
American Alpine Club
Cottonwood Canyons Foundation
Central Wasatch Commission
Wasatch Backcountry Rescue
Salt Lake County Search and Rescue
National Ability Center
Wasatch Mountain Club
Save Our Canyons
Salt Lake Area Queer Climbers
Color the Wasatch
The Metcalf Foundation

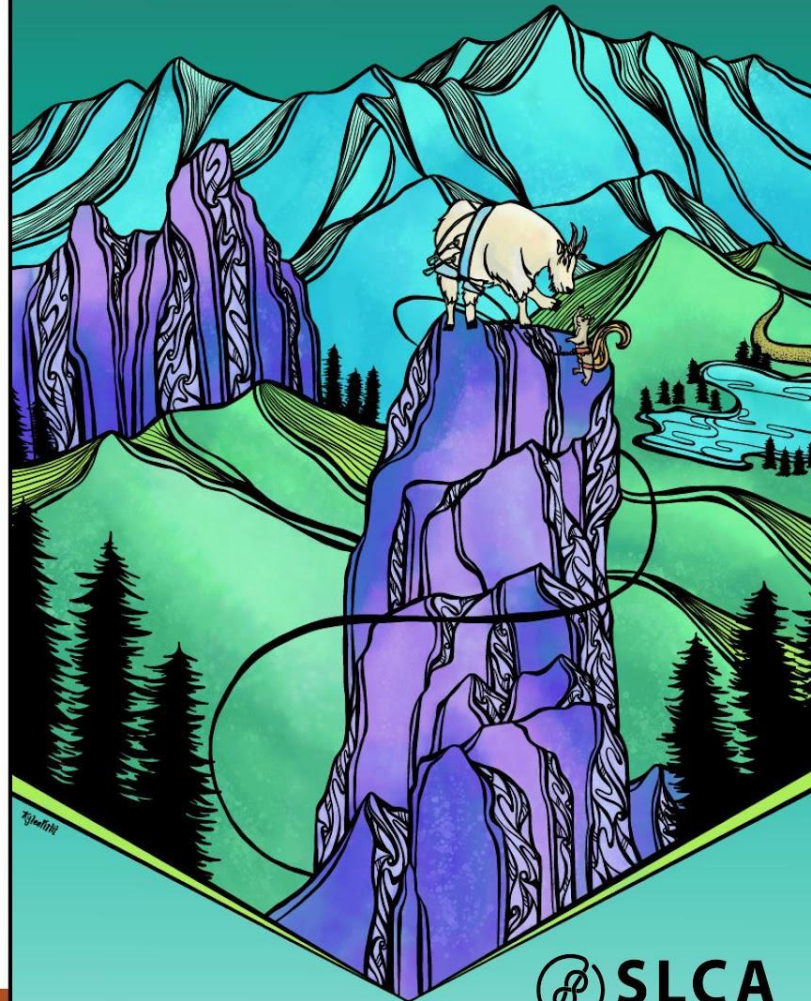
Friends and family in loving memory
of Merrill Bitter

Agencies

The State of Utah and Utah Division
of Outdoor Recreation
United States Forest Service
Salt Lake County
Recreational Trails Program Grant
Draper City Trails and Open Space

Artists

Headlamp Studios
Louis Arevalo Photography
Kylee Firlit
Lovin' Coven
Cactus to Pine
Honeysuckle Handmade Studio
Kiln It
The Trash Pile
Tatum Lee
Trevor Dahl
White Rim Prints
Salt Canyon Designs
Alysa Marie Orton



PARTNERSHIP OPPORTUNITIES

FOLLOW US: SALTLAKECLIMBERS.ORG   @SALTLAKECLIMBERS

